

# What is the NJECC?

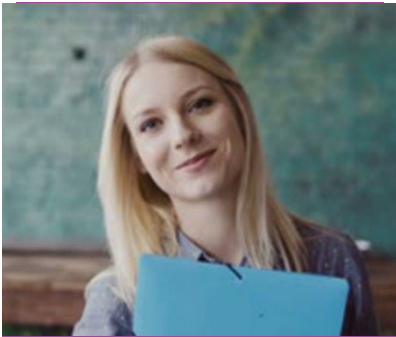
The New Jersey Employees Charitable Campaign is the only statutorily authorized fundraising solicitation of employees in the public workplace on behalf of charitable organizations.



Thanks to legislation that created the New Jersey Employees Charitable Campaign in 1985, employees of state agencies, universities, county government, municipalities and school districts throughout New Jersey enjoy the benefit of giving to many of their favorite charities through an annual workplace giving campaign which features the convenience of payroll deduction.

**Since its inception more than 35 years ago, the campaign has raised nearly \$50 million for charitable organizations – local, national, and international.**

For more information about the NJECC, visit [www.njecc.net](http://www.njecc.net).



**Donations exceeded \$652,493 for charitable organizations in 2022.**

It's not hard to see why employees of the Garden State have responded so enthusiastically to the NJECC:

- It's an easy, effective and cost-efficient way to give to charities.
- Our contributions help improve the quality of life for people in communities locally, across the country and around the world.
- The campaign supports a wide variety of vital health and human services.
- All charities in the campaign must meet strict eligibility criteria.

## How does it work?

Each fall, we get the opportunity to learn about the charities in the NJECC and choose which ones we want to help, and then go online or fill out a paper pledge form to indicate how much we wish to donate to which groups. You can make a one-time gift by check or credit card. Or, even better, your gift can be deducted from each paycheck beginning with the first pay period of 2024.

The campaign runs from September through December.

The directory provides information on all the charities in the campaign – a great resource not only for helping you make your choices, but also for finding help if you need it yourself.

## What charities are involved?

One of the great benefits of the NJECC is the wide variety of charities and causes represented – there's something for everyone. They range from small local organizations to large and well-known national and international groups.

Those charities that wish to participate must meet stringent legal requirements and apply each year to participate.

- They are recognized by the IRS as 501(c)(3) nonprofit organizations and registered with the NJ Division of Consumer Affairs, Charities Registration Division
- They provide direct or indirect health and human services.

## Why should I give?

- To help those who are less fortunate through no fault of their own.
- To support a favorite cause or charity on a regular basis.
- It's the right thing to do.
- It will make you feel great.
- It's tax deductible.



### Low Overhead:

15% of the total dollars received are used to cover the administrative cost of the NJECC. This includes the 10% cap as mandated by the New Jersey State Treasury Department and an additional 5% as determined by the charities that participate in the campaign.

## How Much should I give?

How much to give is totally up to you. Your personal generosity is no one's business but your own and remains confidential. Still, many of us like to have some idea of what is appropriate to consider as a gift.

**FIRST...** you might consider participating as a leadership giver – one of the many people who like to do a little more by donating at the leadership giving levels.

**SECOND...** give what you feel is appropriate for you and your budget – any gift, no matter how large or small, can make all the difference in the world to the charities in this campaign.

## Benefits of payroll deduction

Payroll deduction offers a special opportunity to do more and feel it less.

- It helps to minimize costs while maximizing your contribution.
- You can manage your own philanthropy...you know when deductions start and that you can end them at any time.
- It saves time and takes little effort.

**Learn more and give:**

[www.njecc.net](http://www.njecc.net)



## Best of all...

by donating a specific amount from each paycheck, you can make a much more significant impact on causes you wish to help.